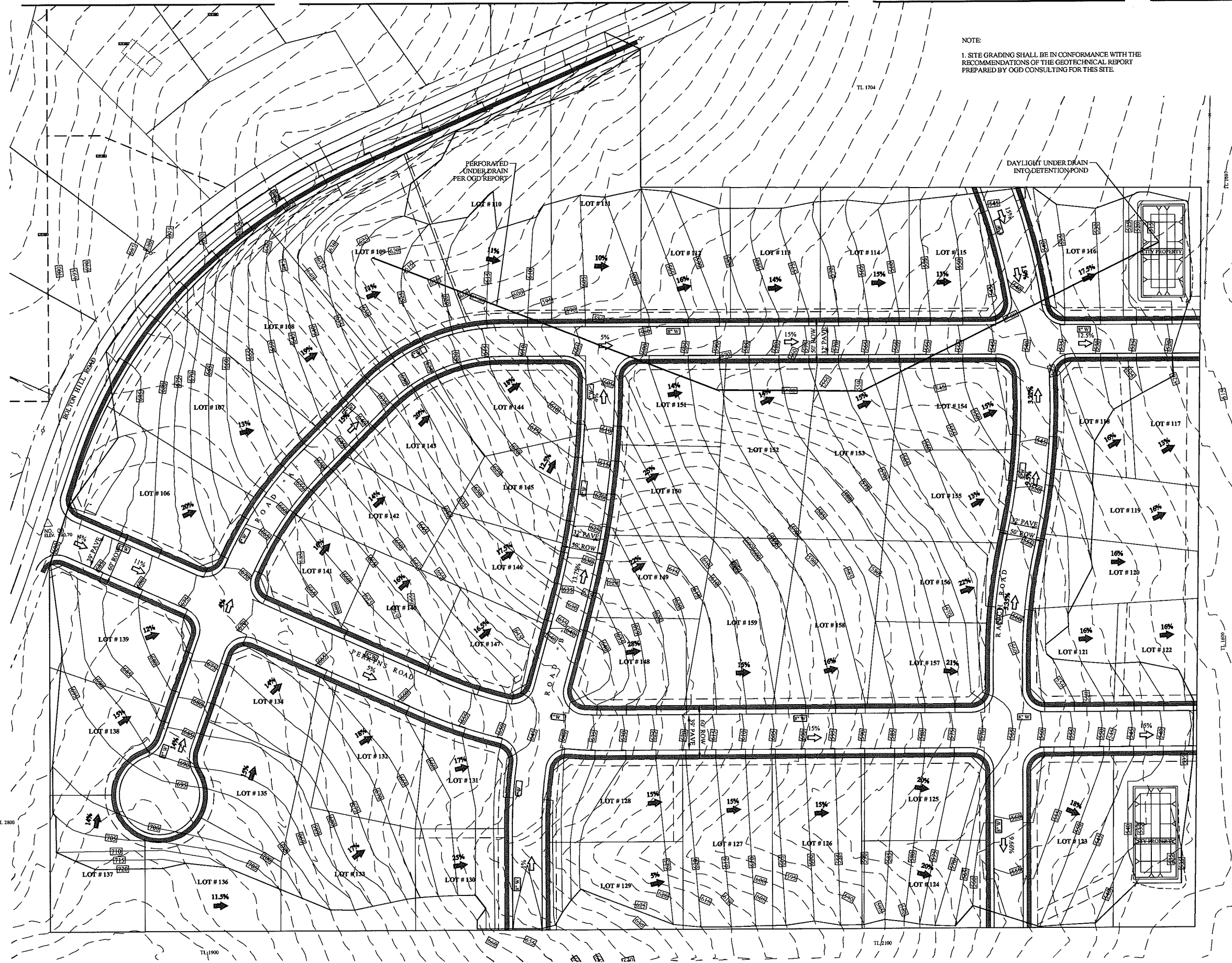
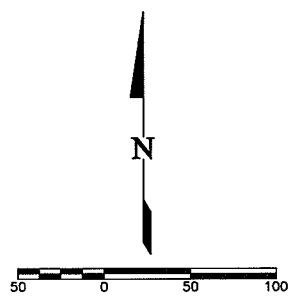


C:\13_2007_230m\070224 Bolton Hill Tent. Sub - FIRST ADDTASK 1 Tentative Subdivision SHEETS (D-SIZE) 070224-1B.dwg (070224_1B) IP
 Reference: 070224_1B LINEWORK (SIP) 070224 Bolton Hill Tent. Sub - FIRST ADDTASK 1 Tentative Subdivision SHEETS (D-SIZE) 070224-1B.dwg (070224_1B) IP
 S:\Projects\070224 Bolton Hill Tent. Sub - FIRST ADDTASK 1 Tentative Subdivision SHEETS (D-SIZE) 070224-1B.dwg (070224_1B) IP
 Main File

LEGEND

- EXISTING CONTOURS
- PROPOSED CONTOURS
- PROPOSED LOT GRADE
- PROPOSED ROAD GRADE



NOTE:
 1. SITE GRADING SHALL BE IN CONFORMANCE WITH THE RECOMMENDATIONS OF THE GEOTECHNICAL REPORT PREPARED BY OGD CONSULTING FOR THIS SITE.

EGR & Associates, Inc.
 Engineers, Geologists, and Surveyors

2535B Prairie Road
 Eugene, Oregon 97402
 (541) 686-8922
 Fax: (541) 686-9087

REVIEWS: 12/31/07

BOLTON HILL RANCH ESTATES
 1ST ADDITION
 TENTATIVE SUBDIVISION
 PRELIMINARY GRADING PLAN
 VENETA, OREGON

Date	Job Number	Design by	Drawn by	Checked by	Description of Revisions	No.
10-19-2007	0210-07-0224	R. SWCR	R. DOTSON	B. ERICKSON		